



Replaces HID's | Highly Efficient

Application

- Warehouse
- Distribution
- Aisles
- Retail

Advantages over Metal Halide

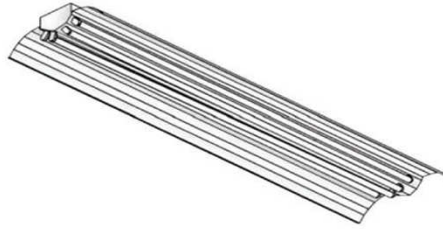
- Higher efficiency/energy saving
- Increase light levels while reducing wattage
- Instant on and re-strike
- Multi-Level Switching
- Longer Lamp Life
- Higher Lumen Maintenance
- Higher color rendering

Features

- Tool-free ballast
- 25 year reflector warranty
- Computer designed for ideal photometry
- Maximized efficiency
- Qualifies for EPACT and Utility Rebates

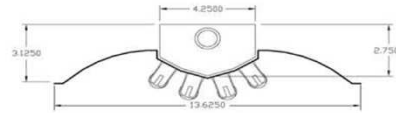
Construction

- Designed for surface, chain, gripper or continues row mounting
- Knockouts on housing back and end
- Fixture body and end constructed from .032 aluminum
- Computer Designed UL reflector
- Twist lock sockets



Electrical

- UL 1598 approved and CUL
- NEC installation required quick ballast disconnect
- Universal 120-277 voltage
- Name brand electronic ballast
- T8 fixtures include Instant start ballast
- T5 fixture include program start ballast
- Emergency ballast options
- NEMA cord and plug options available



Fixture Ordering Guide

Series	No. of Lamps	Lamp Wattage	Fixture Length	Reflector Material	Electronic Ballast Options
FSP - Medium Profile	4 - Four Lamps 8 - Eight Lamps	32 - 32 Watt T8 54 - 54 Watt T5	48 - 48 Inches 96 - 96 Inches	EA - 95% Enhanced Aluminum SA - 86% Specular Aluminum WA - 91% White Aluminum MA - 93% Micro Aluminum	H - High Power N - Normal Power L - Low Power 4 - 480 Volt

Industrial High Bay 4 & 8 Lamps

4-LAMP

Plane Spacing Criteria	0-DEG 1.2
Plane Spacing Criteria	90-DEG 1.2
Efficiency Report Number	89.1% LTL03779

Coefficients of Utilization-Zonal Cavity Method Effective Floor Cavity Reflectance 0.20												
RC	80%				70%				50%			
RW	70%	50%	30%	10%	70%	50%	30%	10%	50%	30%	10%	
0	120	120	120	120	117	117	117	117	111	111	111	
1	108	103	98	94	105	100	96	92	95	92	88	
2	98	90	82	76	95	87	81	75	83	77	72	
3	90	79	71	64	87	77	69	63	74	67	61	
4	83	70	61	54	80	69	60	54	66	58	52	
5	75	62	53	46	73	61	52	46	58	51	45	
6	70	56	47	40	67	55	46	40	52	45	39	
7	64	50	41	35	62	49	41	35	47	40	34	
8	59	45	37	31	58	45	36	30	43	35	30	
9	55	41	32	27	53	40	32	26	39	31	26	
10	51	37	29	24	50	37	29	24	35	28	23	

8-LAMP

Plane Spacing Criteria	0-DEG 1.2
Plane Spacing Criteria	90-DEG 1.2
Efficiency Report Number	89.1% LTL03777

Coefficients of Utilization-Zonal Cavity Method Effective Floor Cavity Reflectance 0.20												
RC	80%				70%				50%			
RW	70%	50%	30%	10%	70%	50%	30%	10%	50%	30%	10%	
0	106	106	106	106	104	104	104	104	99	99	99	
1	97	93	90	86	95	91	88	85	87	85	82	
2	89	82	76	71	87	80	75	70	77	73	69	
3	82	73	66	60	80	71	65	60	69	63	59	
4	75	65	57	52	73	64	57	51	61	55	51	
5	69	58	50	44	67	57	49	44	55	48	43	
6	64	52	44	38	62	51	44	38	49	43	38	
7	59	47	39	34	57	46	39	34	45	38	33	
8	54	42	35	29	53	42	34	29	40	34	29	
9	50	38	31	26	49	37	30	26	36	30	25	
10	47	35	28	23	45	34	27	23	33	27	23	

Fixture Ordering Guide

Ballast Manufacturer

NOS = No Specification
 PRS = Program Start
 GPL = GE Pro Line
 QTP = Sylvania QTP
 ICN = Advance ICN
 GUM = GE Ultra Max
 QHE = Sylvania QHE
 IQP = Advance IOP
 XXX = No Ballast
 CSB = Customer Supply
 ESPEN = ESPEN Technology
 PQL = Premium Quality Lighting

Backup

1B = 1 Lamp
 2B = 2 Lamp
 XX - N/A

Mounting

PMJB = Pendant Mount
 GY15 = Gripple Y Toggle 15
 HBYH = Hanger
 XXXX = N/A

Lamps

841 = 841 (no specs)
 850 = 850 (no spec)
 S41 = Sylvania 841
 S50 = Sylvania 850
 G41 = GE 841
 G50 = GE 850
 P41 = Phillips 841
 P50 = Phillips 850
 XXX = N/A

Sensor

SN1 = Standard 180
 SN3 = Standard 360
 SC1 = Cold 180
 SC3 = Cold 360
 SPC = Photo cell
 XXX = N/A

Sensor Switching

1 = 100% Controlled
 2 = 25% Controlled
 3 = 33% Controlled
 5 = 50% Controlled
 7 = 75% Controlled

Lens

XX = N/A
 (No Lens Options)

Wireguard

WWG = WRAP
 XXX = N/A

Cord Only

C06 = Cord 6'
 C10 = Cord 10'
 C15 = Cord 15'
 XXX = N/A

Cord and Plug

P061 = Cord 6'
 120V Plug
 P101 = Cord 10'
 120V Plug
 P151 = Cord 15'
 120V Plug
 P062 = Cord 6'
 227V Plug
 P102 = Cord 10'
 227V Plug
 P152 = Cord 15'
 227V Plug
 XXXX = N/A



Modern Energy Concepts
 5925 Fair Oaks Blvd. #6
 Carmichael, CA 95608
 (866) 391-2297 (916) 679-0333 fax